

Junior Johnson Racing

1974

Chevrolet® Monte Carlo
driven by
Cale Yarborough

1/25TH scale

18 years and older

made in the U.S.A.

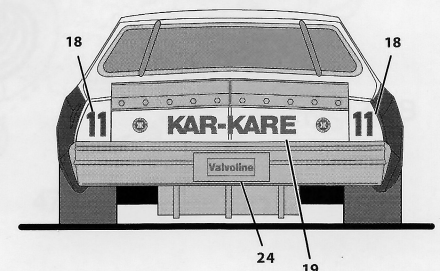
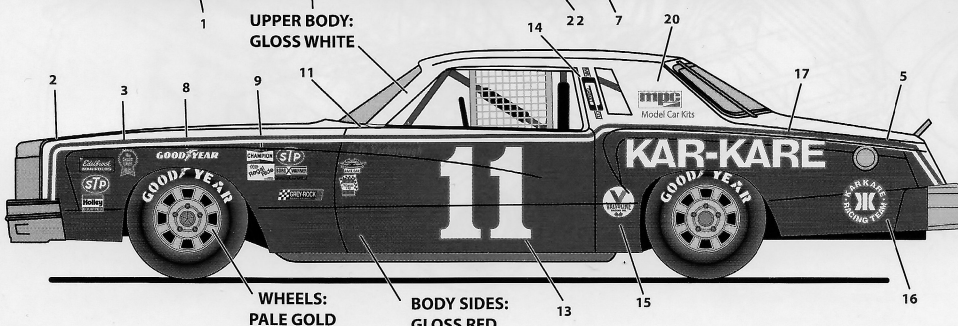
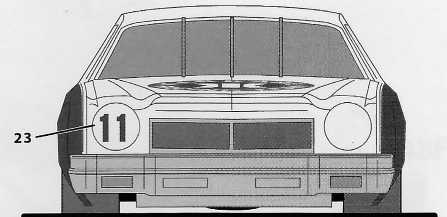
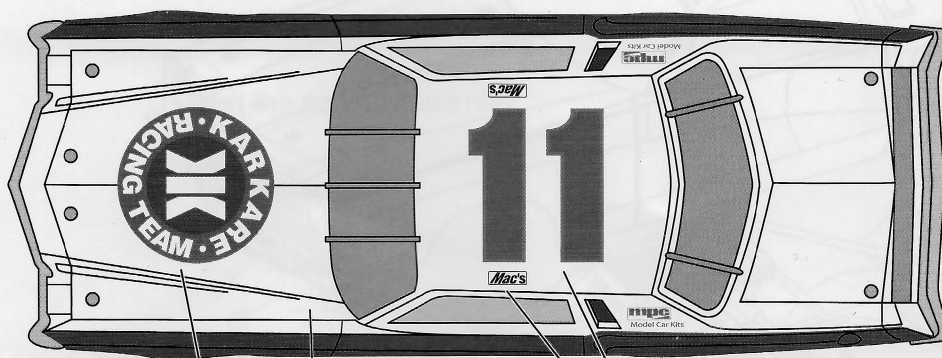
salvinosjrmodels.com



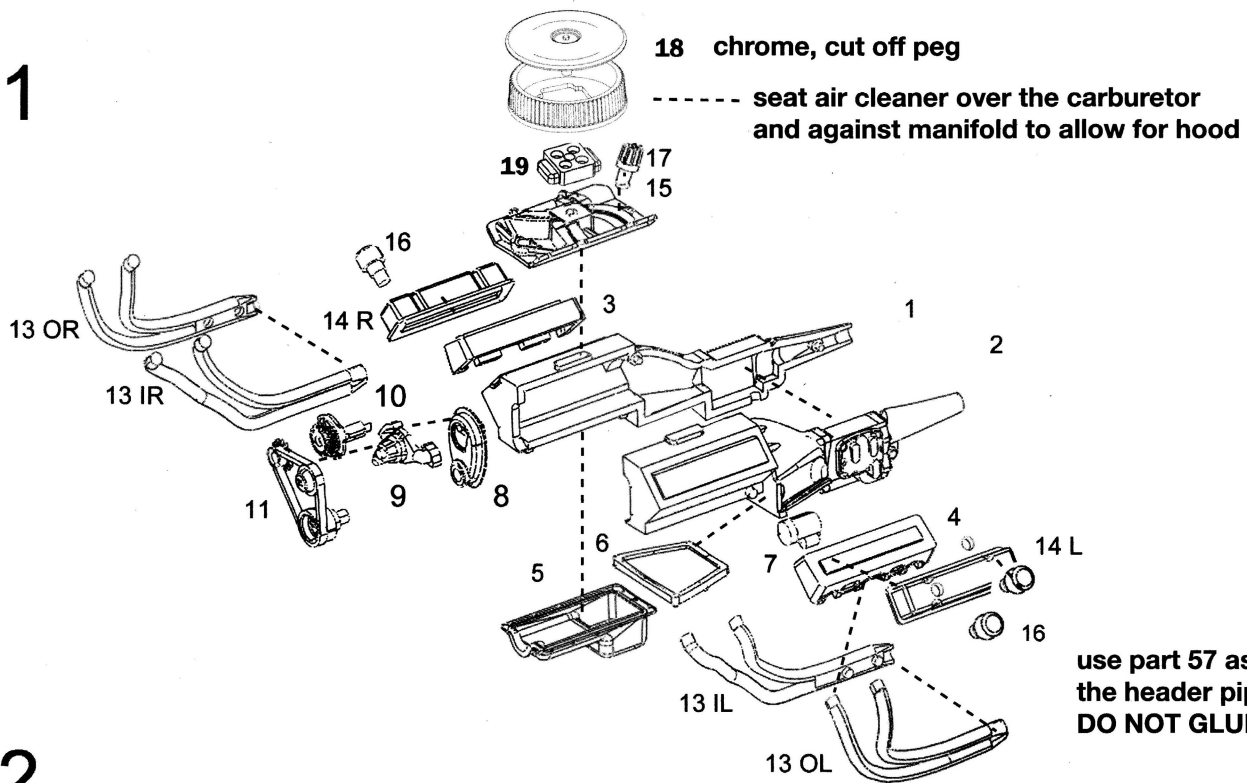
Cale Yarborough is an American farmer, businessman and former stock car driver and owner. He is one of only two drivers in stock car racing history to win three consecutive championships. His 83 wins tie him with Jimmie Johnson for sixth on the all-time series winner's list (behind Bobby Allison and Darrell Waltrip, who are tied for fourth with 84). His 14.82% winning percentage is the ninth best of all-time and third among those with 500 or more starts. He was the second stock car driver to appear on the cover of Sports Illustrated. Yarborough won in Daytona four times; his first win coming in 1968 for The Wood Brothers, the second in 1977 for Junior Johnson. Sports pundits consider the 1979 Daytona race to be the most important race in stock car history. The race was the first 500-mile race televised live beginning to end, a rarity in that era in the United States, and on the final lap, race leaders Cale Yarborough and Donnie Allison collided with each other on the backstretch. Both drivers' races ended in Daytona's grass infield. The wreck allowed Richard Petty, then over one-half lap behind both, to claim his sixth Daytona 500 win. In 1983 Yarborough moved to the No. 28 Hardee's Chevrolet owned by Harry Ranier, competing in 16 events. He won four races, including his third at Daytona, his sixth in Atlanta, and swept both events at Michigan, along with three poles. In 1984 he repeated by winning his fourth at Daytona, becoming the second driver to score back-to-back wins. Yarborough is a three-time winner of the National Motorsports Press Association Driver of the Year Award (1977, 1978, 1979).

[Information courtesy of Wikipedia.org/wiki/Cale_Yarborough]

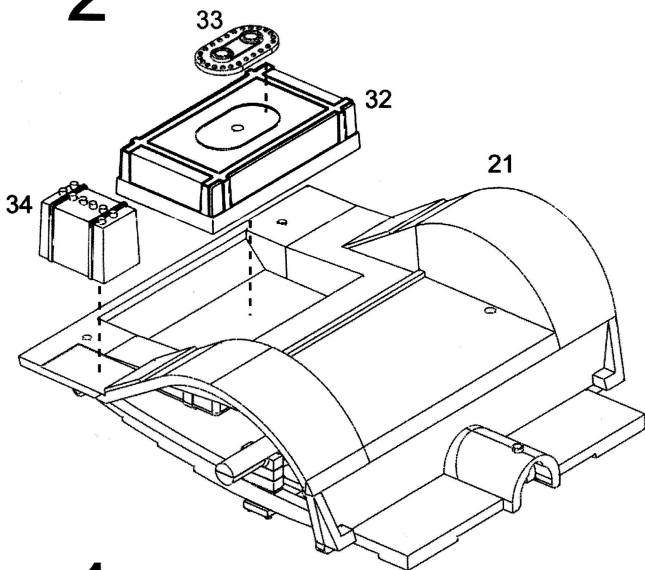
General Motors Trademarks used under License to Salvinos J R Models, Inc.
© 2019 Licensed By Junior Johnson Racing



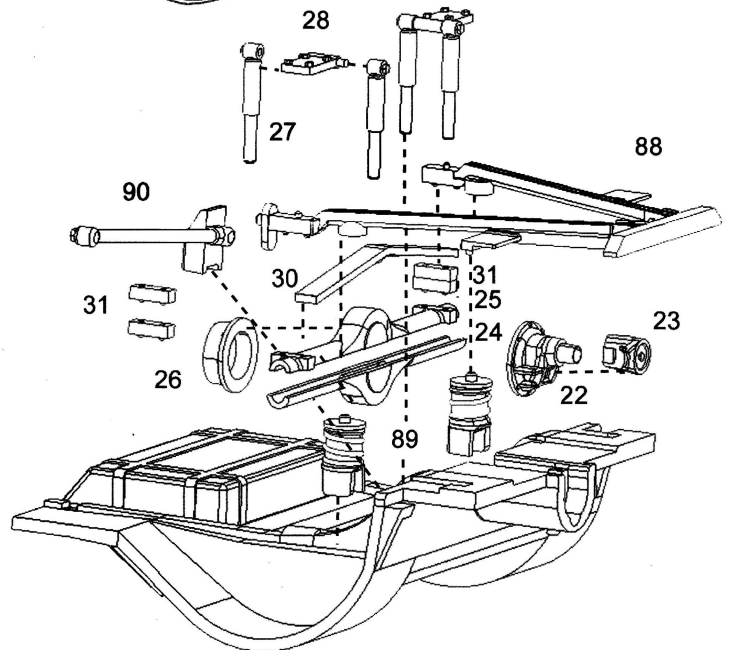
1



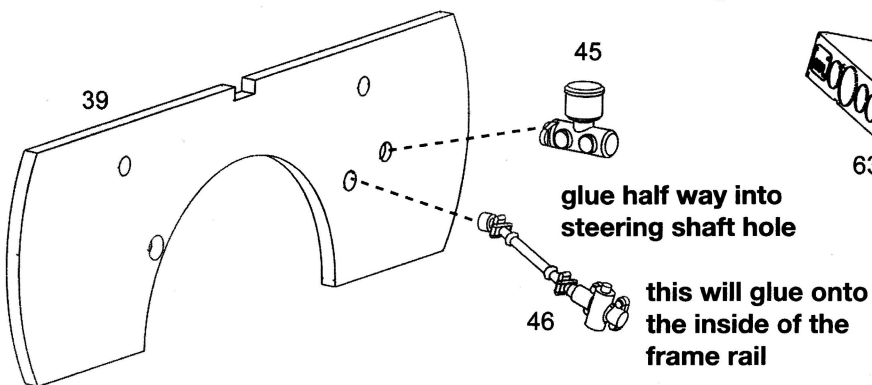
2



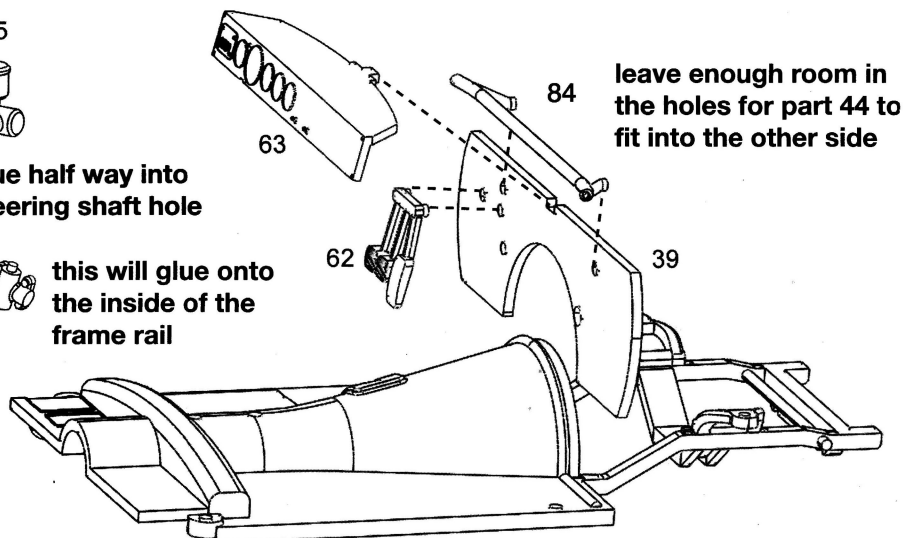
3

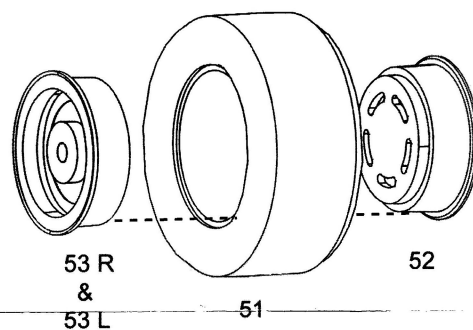
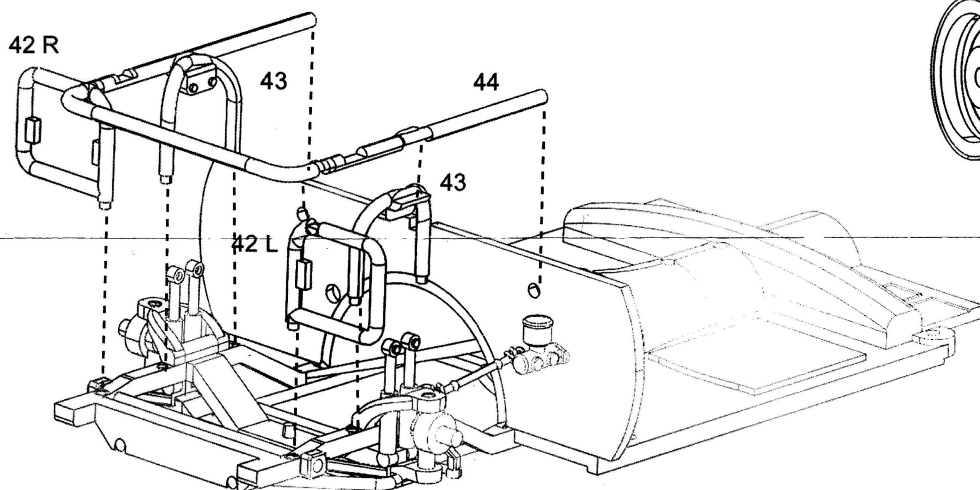
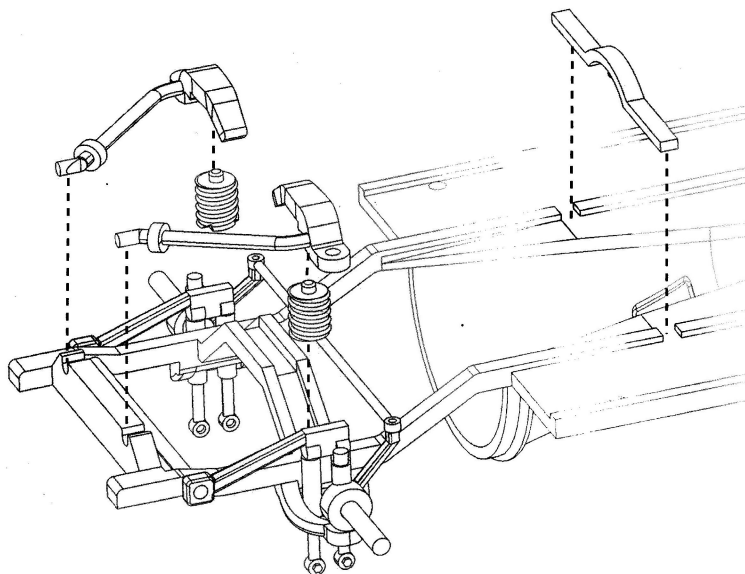
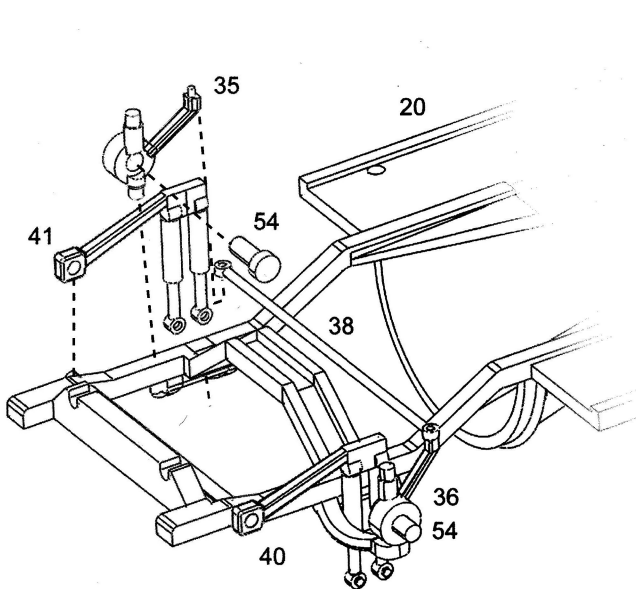


4

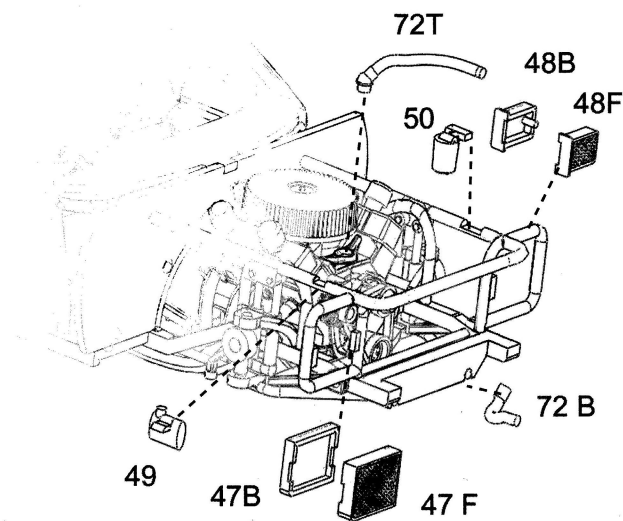
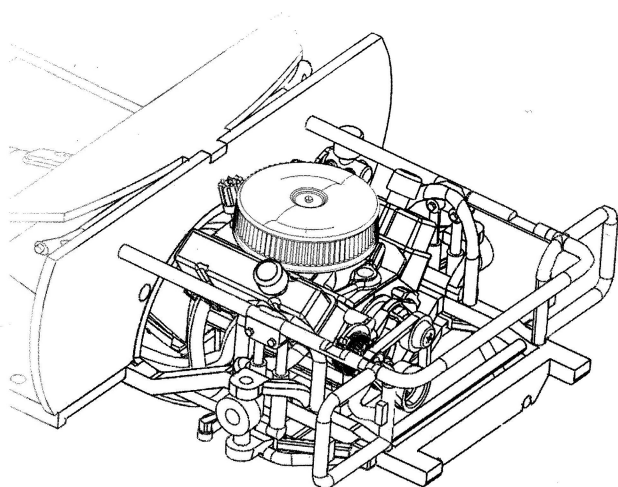


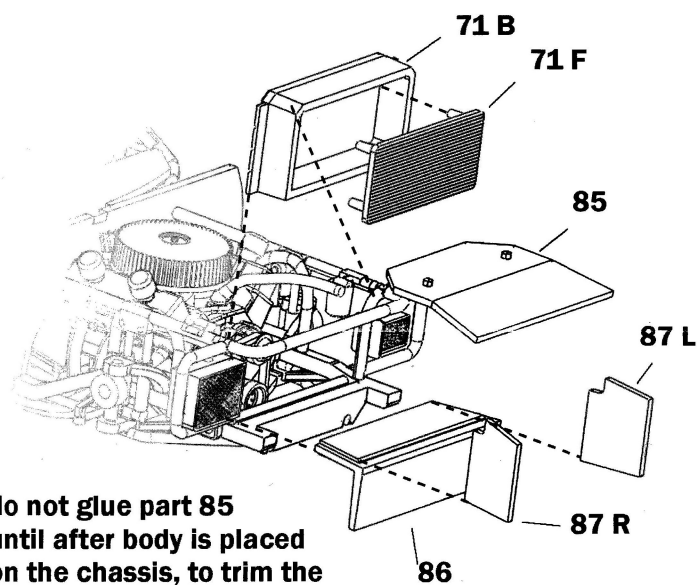
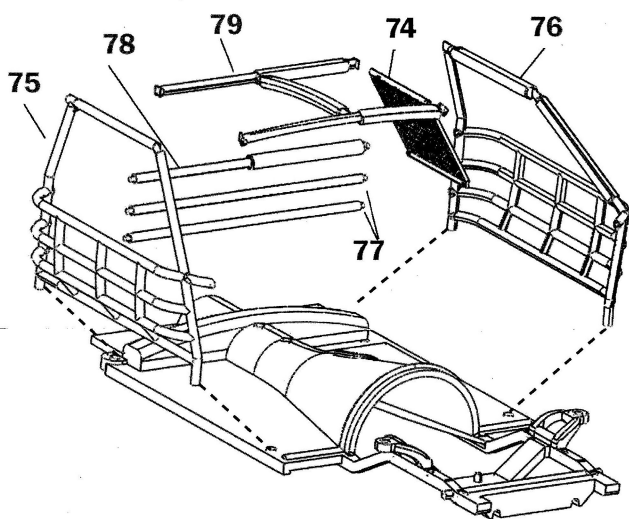
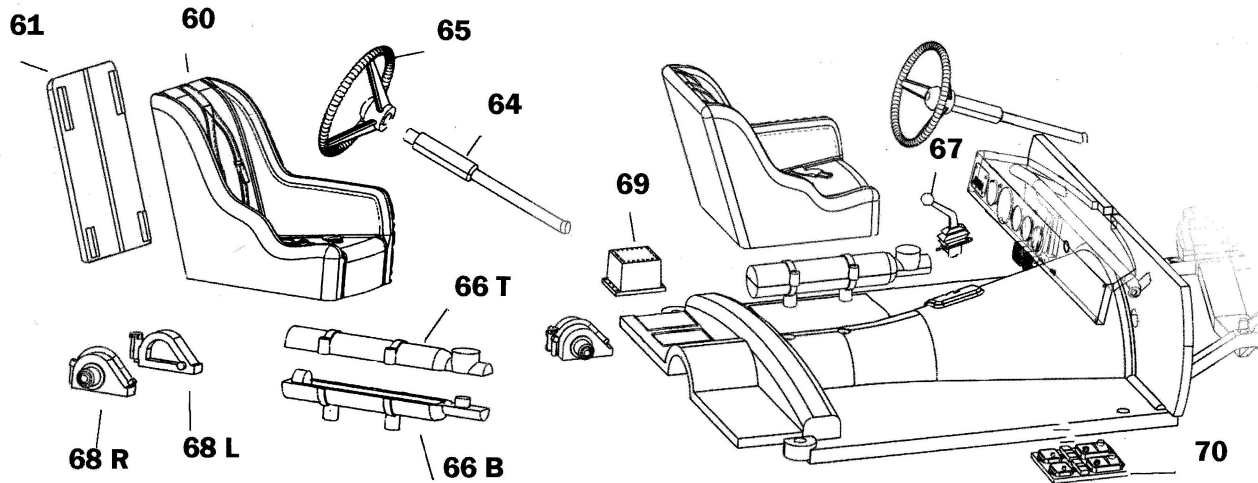
5



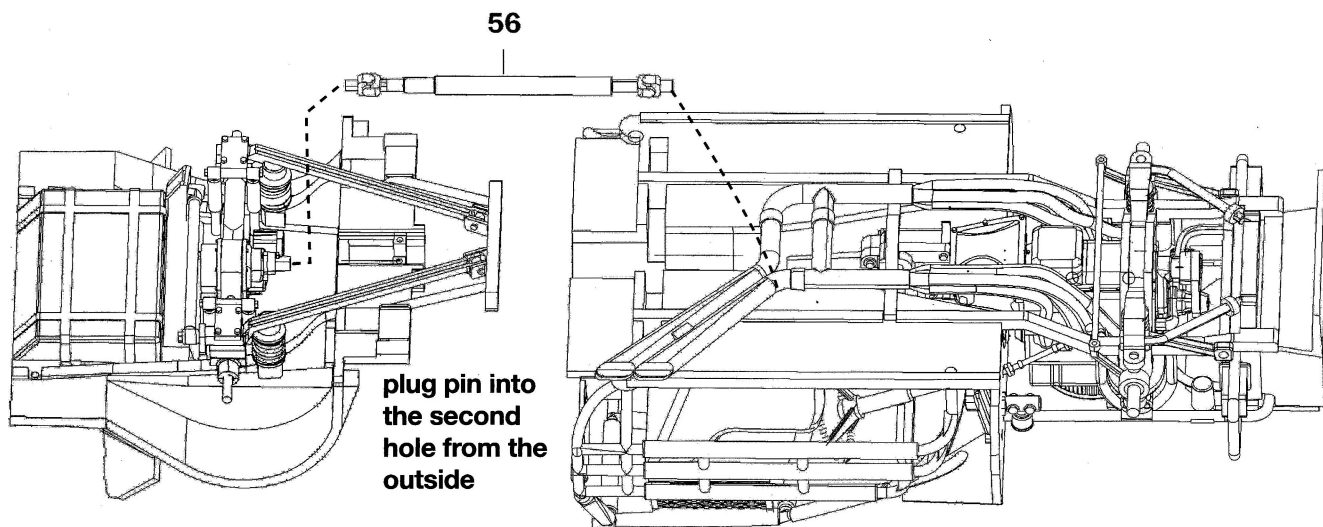


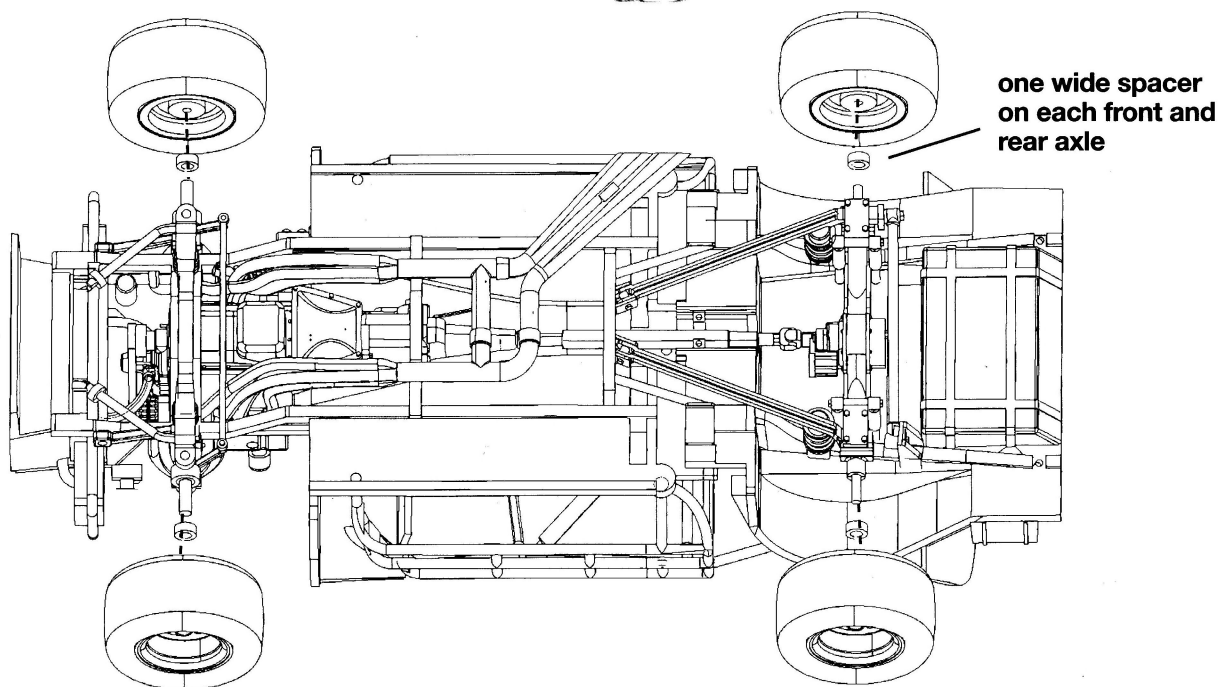
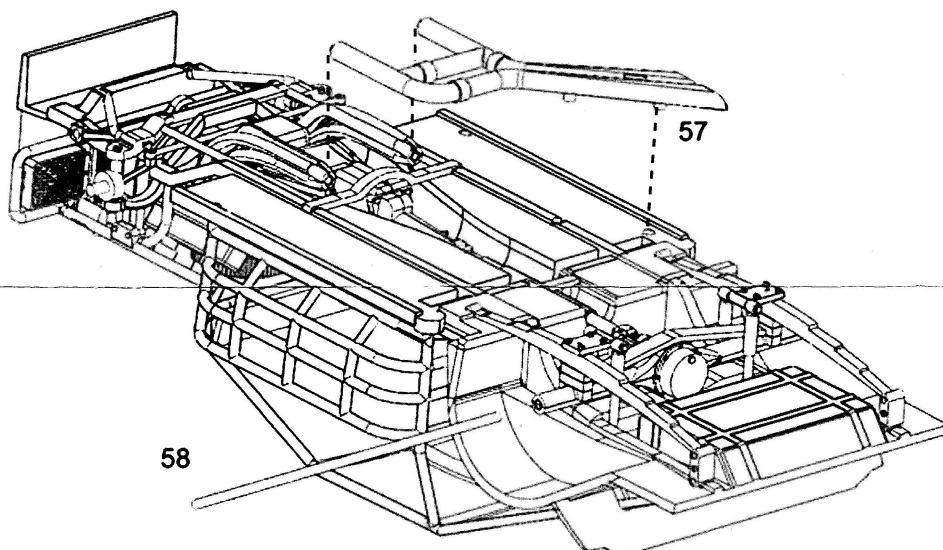
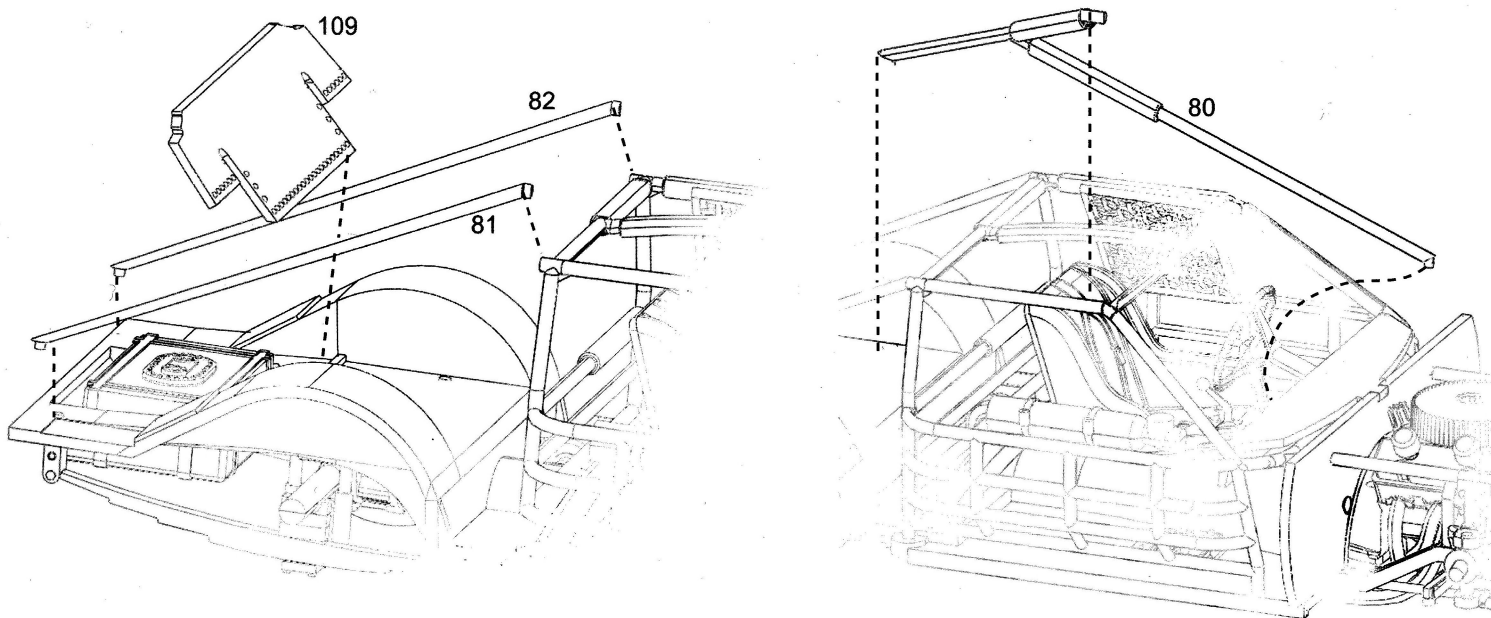
insert the engine assembly





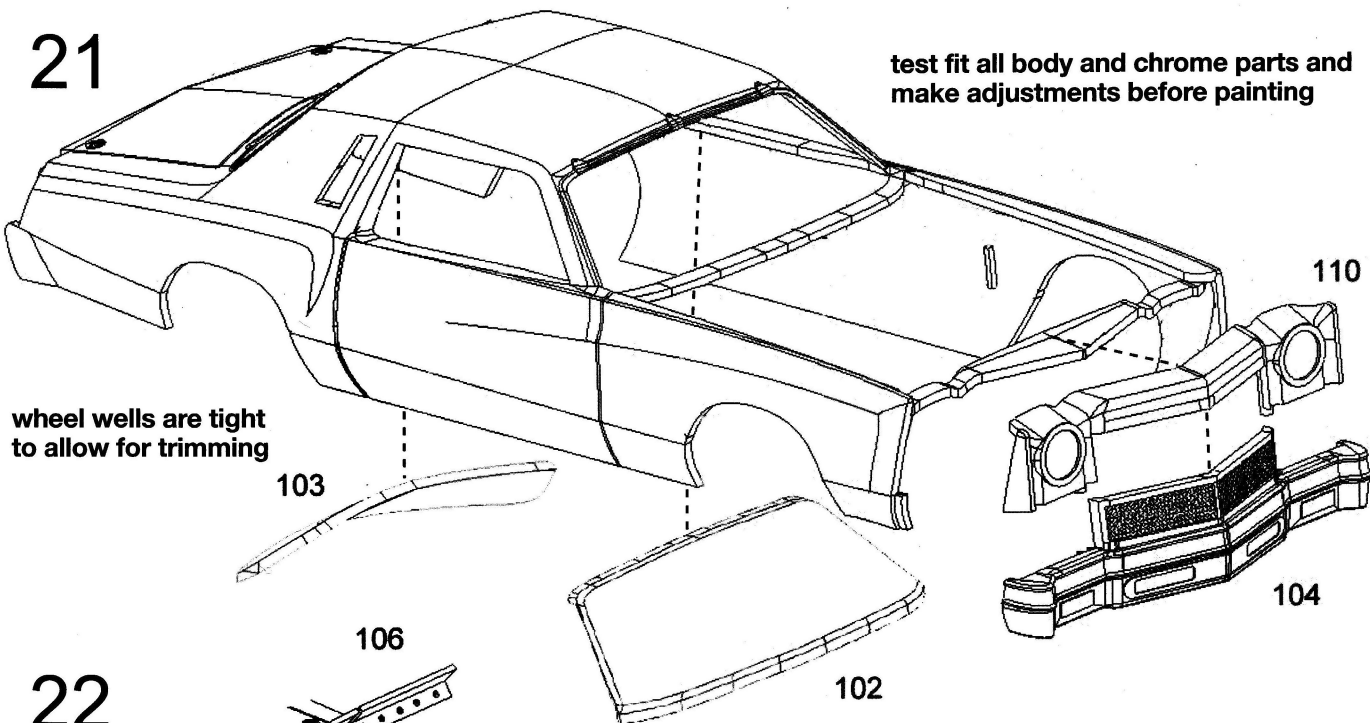
do not glue part 85 until after body is placed on the chassis, to trim the front edge



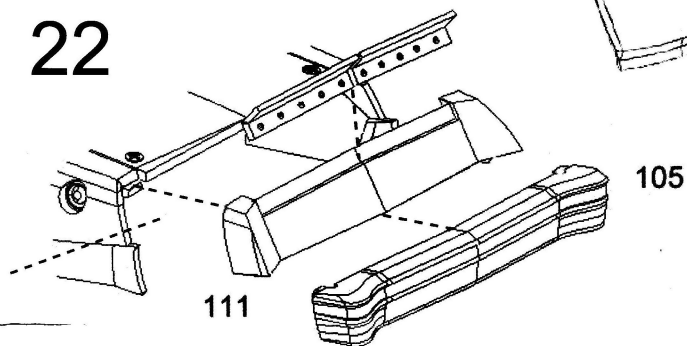


21

test fit all body and chrome parts and make adjustments before painting



22



23

